

## What you'll need:

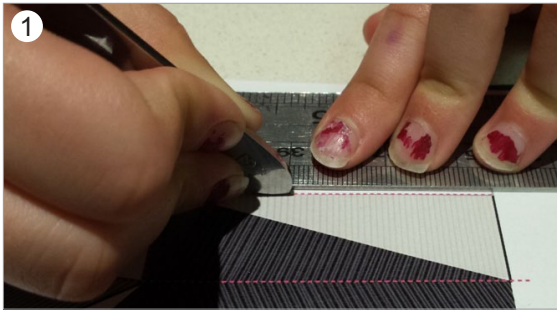
- 1 x scissors
- 1 x ruler
- 1 x scalpel
- 1 x cutting board
- 1 x sticky tape
- 1 x set of printouts
- 1 x green straw (cut into 9cm long piece)
- 1 x adult to supervise

Always be really careful when using a scalpel.

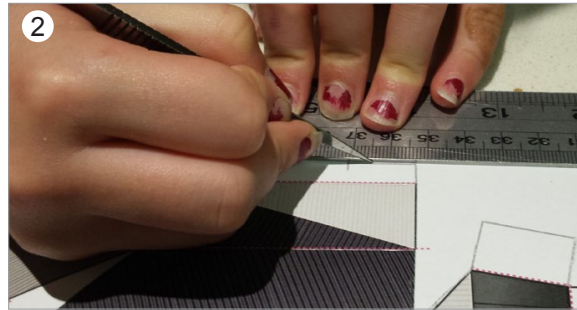
## New Word

### SCORING\*

Using a blunt instrument (like the back of a knife), to press paper along a straight line (so it can fold more easily and accurately).



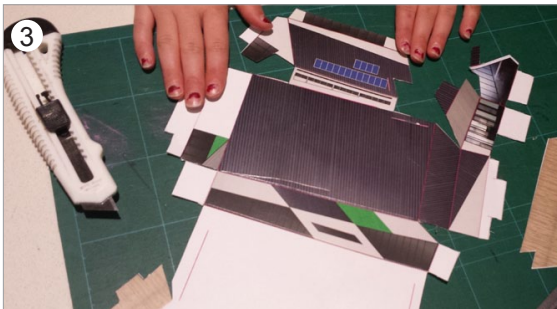
**STEP 1:** Using the back of your scalpel, 'score\*' along all the broken pink lines on the printouts - these will help make folding much easier later on.



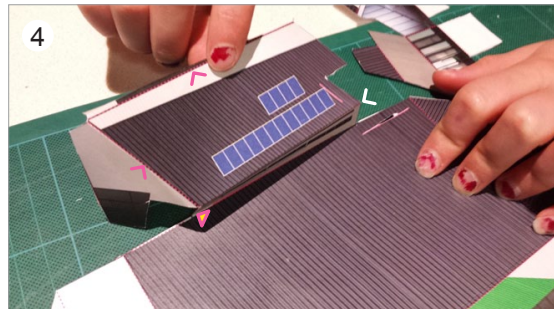
**STEP 2:** Cut along the 'outside' edges of the artwork using scissors OR, line up your ruler along the edge of the artwork and carefully cut with the scalpel...



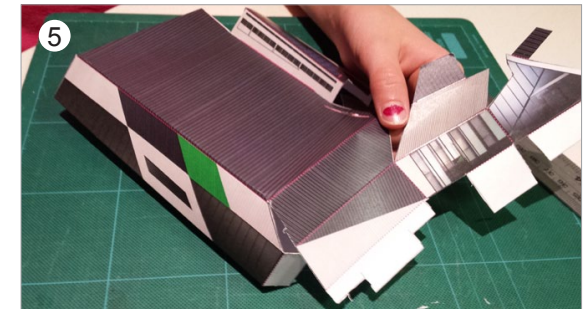
...take your time, and don't rush. A steady hand means you'll finish up with a more precise cut-out, and are less likely to have an accident.



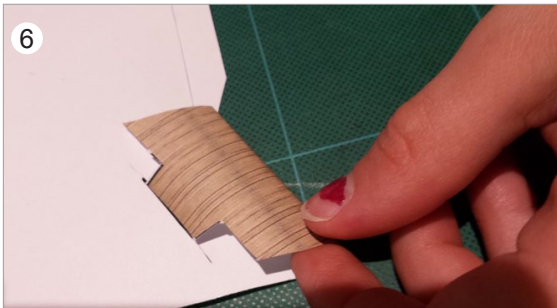
**STEP 3:** Carefully remove your building template from the page; keep the outside bit, you'll need to refer to it - now you're ready to start folding.



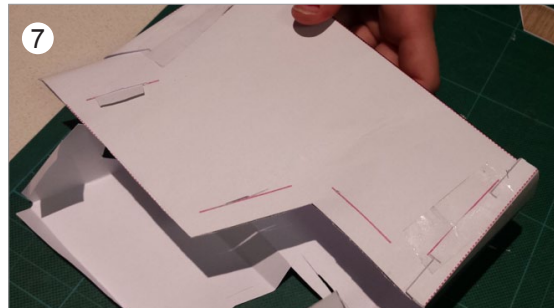
**STEP 4:** Fold these edges in the direction (up or down) as marked up on the page you cut the template out of.  
 ▲ = fold outwards ▼ = fold back inwards into itself.



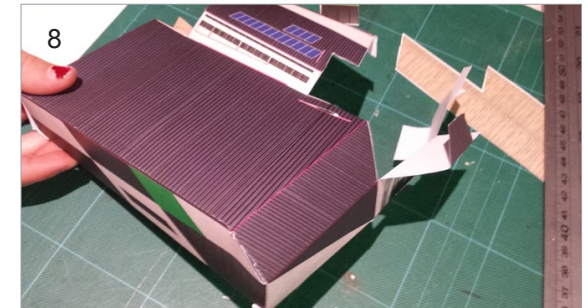
**STEP 5:** As you fold the panels, you'll see the building slowly taking shape.



**STEP 6:** Start sliding the tabs into the cuts; match them up with the corresponding letters A to A, B to B and so on.

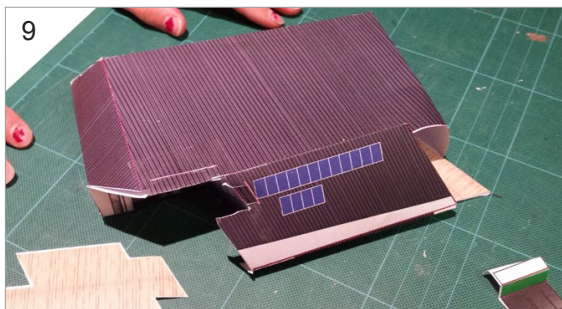


**STEP 7:** After you've placed the tab into it's corresponding cut, tape it up to keep it fixed in place.

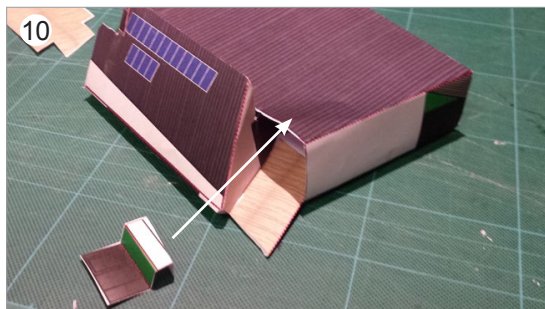


**STEP 8:** Carefully work your way around the building until all the tabs are in place and taped up.

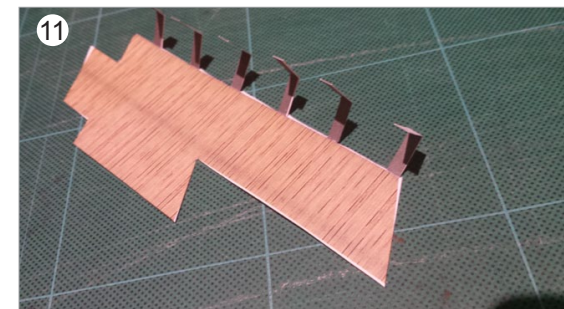




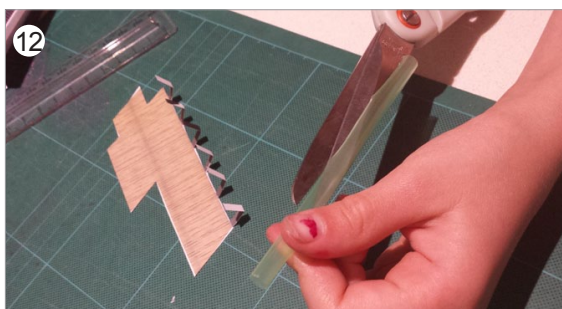
**STEP 9:** Once the front of the building is constructed, you will have two extra bit's you'll need to add to the structure - a small wall and the entrance walkway.



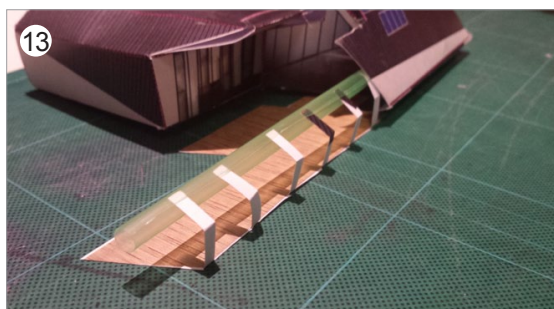
**STEP 10:** Connect the wall piece as per the page instruction J to J.



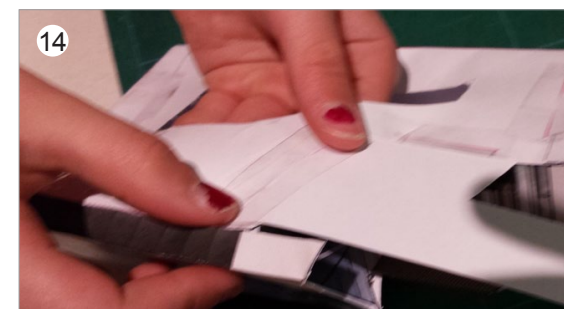
**STEP 11:** Cut and fold the entrance walkway very carefully, now you're ready to attach the straw.



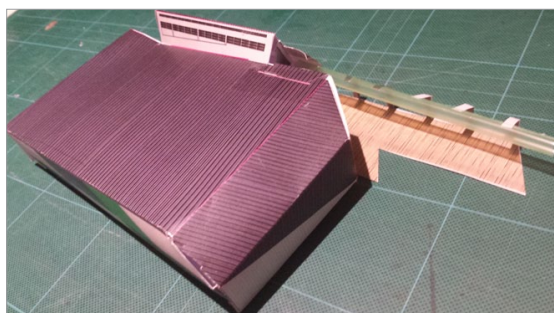
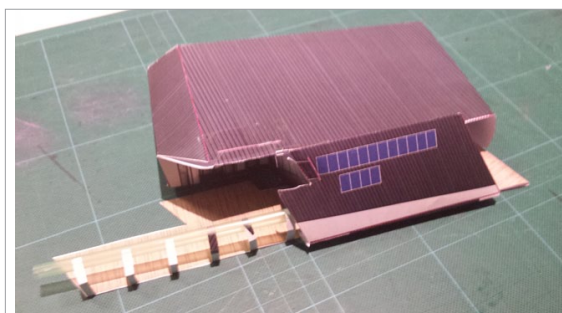
**STEP 12:** Cut a piece of green straw into a 9cm long piece and then make one cut along the middle of the straw, this will allow you to slide the rails into.



**STEP 13:** You should now have a rail and walkway ready to attach to the front of the building.



**STEP 14:** Flip the building over and carefully tape the tab K to the bottom of the building.



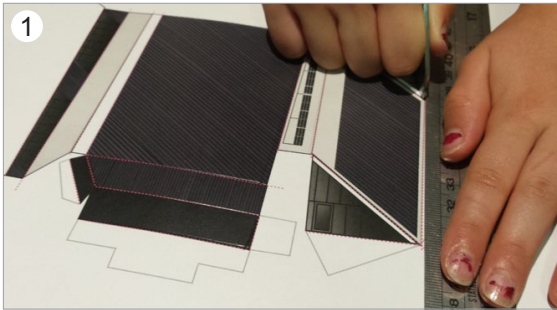
Congratulations! You now have the front part of the Ecolinc building constructed. Once you're ready to start putting together the bottom half of the building, move onto page three of these instructions.



## What you'll need:

- 1 x scissors
- 1 x ruler
- 1 x scalpel
- 1 x cutting board
- 1 x sticky tape
- 1 x set of printouts
- 1 x adult to supervise

Always be really careful when using a scalpel.



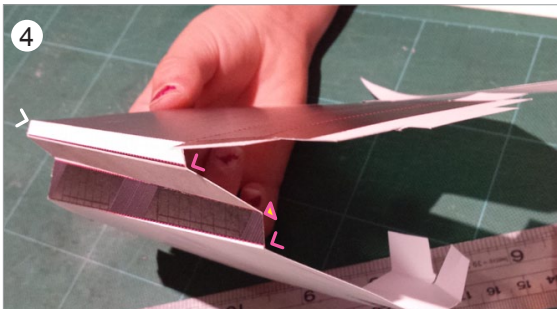
**STEP 1:** Using the back of your scalpel, 'score\*' along all the broken pink lines on the printouts - these will help make folding much easier later on.



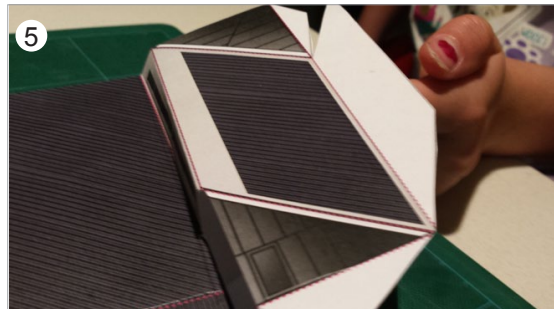
**STEP 2:** Cut along the 'outside' edges of the artwork using scissors OR, line up your ruler along the edge of the artwork and carefully cut with the scalpel...



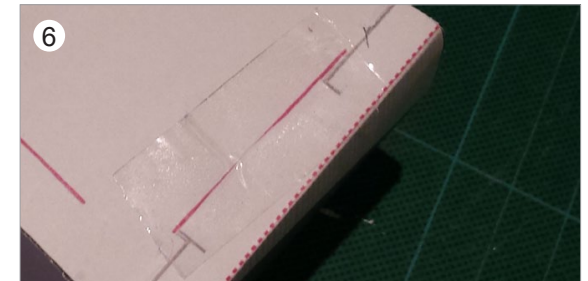
...take your time, and don't rush. A steady hand means you'll finish up with a more precise cut-out, and are less likely to have an accident.



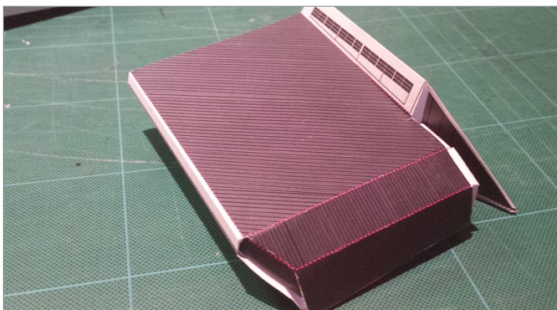
**STEP 3:** Once you've cut the shape out, start folding the edges in the direction (up or down) as marked up.   
 ^ = fold outwards ▼ = fold back inwards into itself.



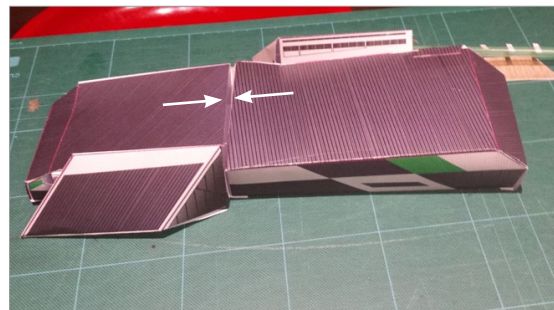
**STEP 4:** As you fold the panels, you'll see the building slowly taking shape.



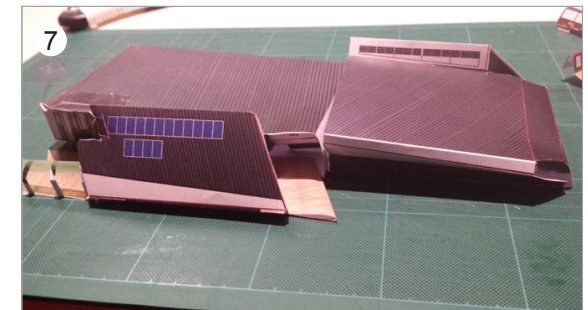
**STEP 5:** As you did with the previous construction, slide the tabs into the cuts, matching them up with their corresponding letters A to A, B to B and so on, and tape them up to keep them fixed in place.



Well done! You now have the back part of the Ecolinc building constructed.



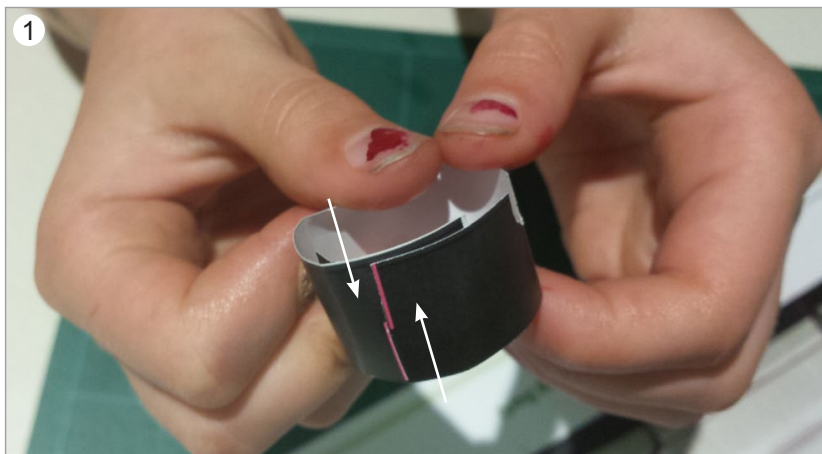
Slide it up behind the front of the Ecolinc building, and you have the completed structure ready to place onto your Ecolinc floorplan, on the area marked up as 'Ecolinc building'.



## What you'll need:

- 1 x scissors
- 1 x ruler
- 1 x scalpel
- 1 x cutting board
- 1 x sticky tape
- 1 x set of printouts
- 1 x green straw (cut into 9cm long piece)
- 1 x adult to supervise

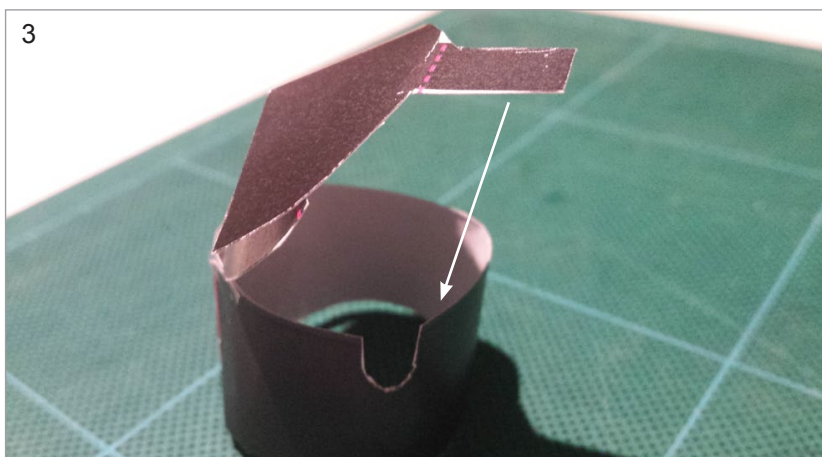
Always be really careful when using a scalpel.



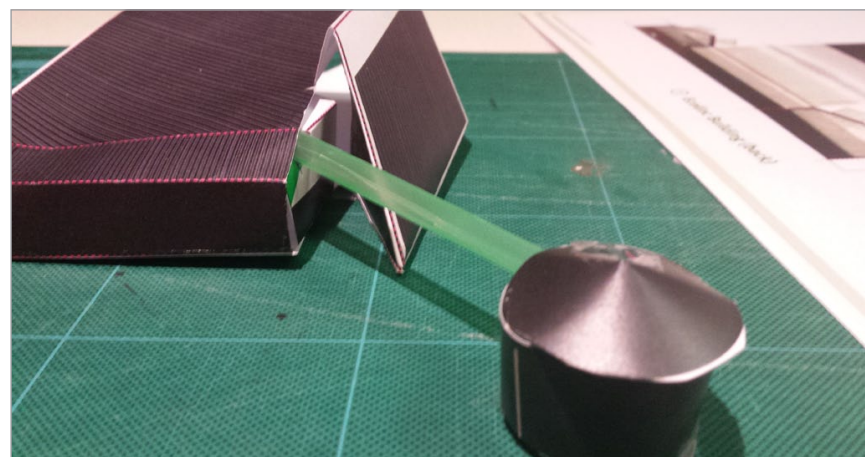
**STEP 1:** Cut out the shapes for the water tanks and connect the corresponding ends (hiding the marked up letters in the process).



**STEP 2:** Overlap the roof of the water tanks where its marked, and tape underneath to keep it in place.



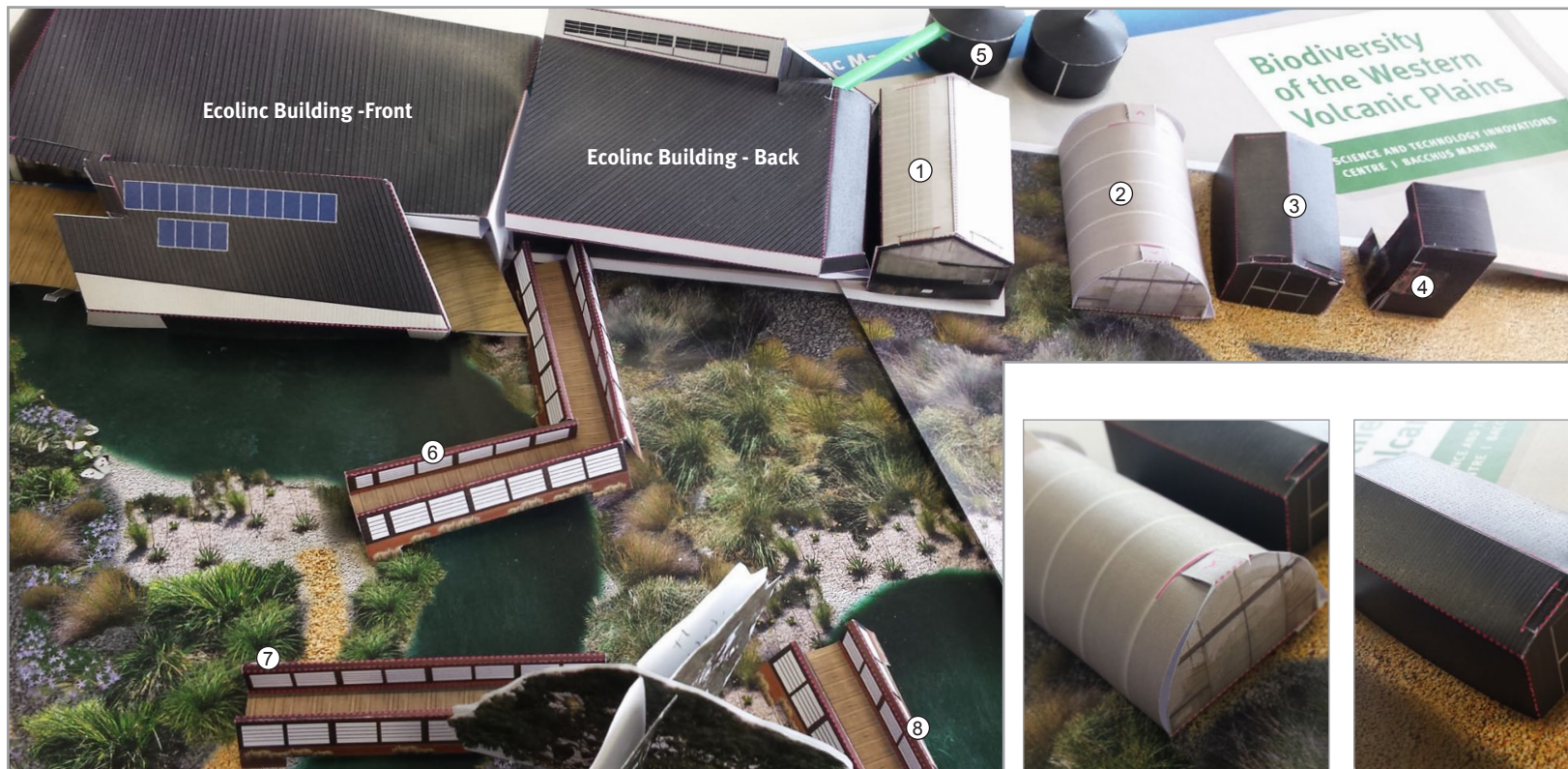
**STEP 3:** Tape one of the long tabs to the inside of the water tanks. Slide the second tab into the cylinder and tape up to the inside as well.



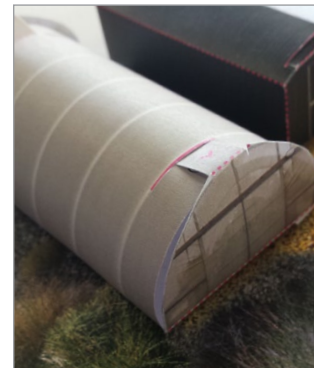
**STEP 4:** One of the water tanks should have a groove, place the straw pipe into this groove and connect it back to the back of the Ecolinc building. Well done.



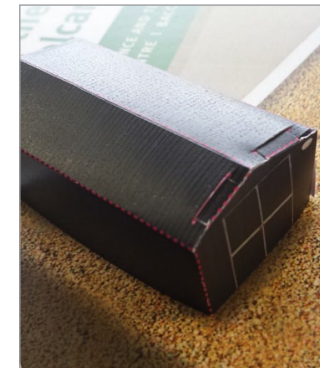
# Ecolinc: buildings placed on the map



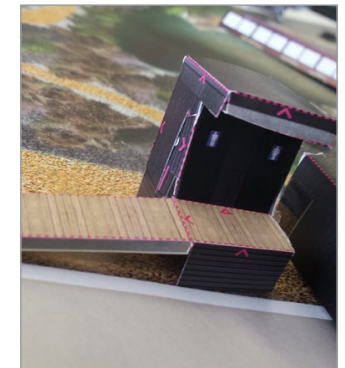
① Greenhouse (attached)



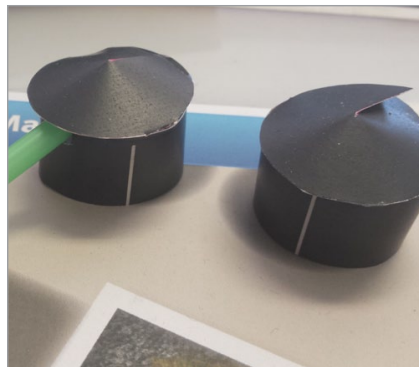
② Shadehouse



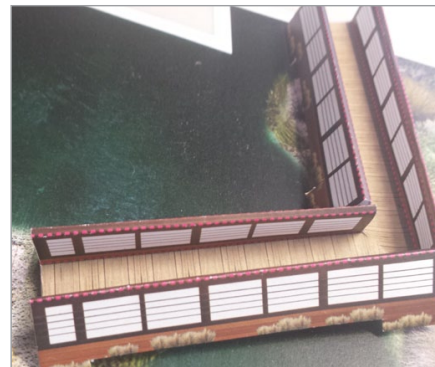
③ Shed



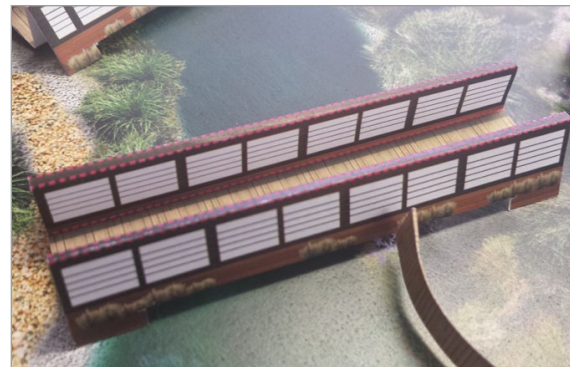
④ Composting toilet



⑤ Water tanks



⑥ Bridge



⑦ Bridge



⑧ Bridge